

# NEWSLETTER

## September

# 2017



Mrs E Connor  
Acting Headteacher

### School Vision Statement

Wharton Primary School is a place where:

- \* every child is safe and happy
- \* we all reach our full potential
- \* every person is valued and respected
- \* all efforts and achievements are celebrated
- \* we encourage everyone to make healthy life choices
- \* everyone is encouraged to make a positive contribution



### A Message from the Acting Headteacher

A warm welcome to all our new families who have joined us at Wharton C. E. Primary this year!

It is my privilege to lead the school as Acting Headteacher, until January when Mrs Natalie Tomlinson will join us.

We are beginning our school year with events galore, starting with Harvest celebrations on September 28<sup>th</sup> linked to our whole school Christian Values focus of 'Thankfulness'. Last year your generosity supporting the local foodbank was incredible and knowing that donations really make a difference in our community, I am sure we can count on your support again this year.

We have an Open Day planned on Wednesday October 4<sup>th</sup> when you are most welcome to view the school 'in action' between 9.30 and 11am or 1.30 to 2.30pm.

It's always interesting to see what your children are up to, even if they all say they've done 'Nothing!' when they get home.

Our fundraising continues, after the success of our Summer Fair, with a fun evening of Beetle drive on October 5<sup>th</sup> starting at 5pm. Your support is always appreciated as it helps us to subsidise events and enhancements for all the children. Many thanks to our fundraising team, for organising our events.

Please take the time to enjoy the updated class pages on our website where each year group will blog their latest events and achievements. Already we are seeing some impressive work and exciting learning!

Mrs E Connor - Acting Headteacher

#### Contact Details:

Website: [www.wharton.cheshire.sch.uk](http://www.wharton.cheshire.sch.uk)

Telephone Number: 01606 288110

Email: [admin@wharton.cheshire.sch.uk](mailto:admin@wharton.cheshire.sch.uk)

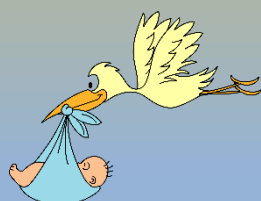
# DATES FOR YOUR DIARY

DATE	DAY	EVENT	TIME	WHERE	FOR WHOM	
28/9	Thurs	Harvest Celebration Service	9:30am - 10:15am	At Christ Church ( <u>Only Year 4</u> Parents are invited at the times stated)	KS2 at various times	
4/10	Wed	School Open Day (Drop in Session)	9:30am - 11:00am & 1:30pm - 2:30pm	Open day for prospective parents of children due to start school in September 2018.	All Welcome	
5/10	Thurs	BEETLE DRIVE	5:00pm - 7:00pm	In the School 'Main Hall' (Children must be accompanied by an adult)	All families	
17/10	Tues	Parents Evening	4:30pm - 6:30pm	School	Whole School	
18/10	Wed	Parents Evening	4:30pm - 7:00pm	School	Whole School	
23/10	Mon	Christian Values Day - Thankfulness	All Day	School	Whole School	
25/10	Wed	Individual School Photographs	All Day	School	Whole School	
26/10	Thurs	VIP DAY	All Day	School	Children will be notified	
27/10	Fri	Celebration Assemblies	Various Times	School	Whole School	
27/10	Fri	<b>SCHOOL CLOSSES</b>				
6/11	Mon	<b>SCHOOL RE-OPENS</b>				

Please note that letters have been or will be sent regarding the above diary dates. All the above information is also accessible on the school website: [www.wharton.cheshire.sch.uk](http://www.wharton.cheshire.sch.uk)



We would like to re-iterate that as always, staff are available to speak to at the end of most days and you will often find Mrs Connor and/or Mrs Killalee on the school playground as the children come into school. All staff would be more than happy to answer any queries, concerns that you may have - so please keep in touch!



**Staff News:** Congratulations to Mrs Olson on the birth of her baby boy, Stanley, who arrived a little early on August 20<sup>th</sup> weighing 6lb 1oz.

He is now home having lots of cuddles from his big sisters!

# IMPORTANT INFORMATION

Can parent/carers please note that request for absence that has not been authorised will result in a fixed penalty notice.

The Government discourages the taking of holidays in term time. Evidence shows that children who miss school do not achieve as well as those who attend regularly.

As of September 2013, the law has restricted a Head Teacher's ability to authorise holidays during term time. Head Teachers are now only empowered to approve a leave of absence when it is requested in advance by the parent or carer with whom the child resides and when circumstances of the requested leave are 'exceptional'.

Should you still choose to take a holiday with your child during this period the Local Authority will be informed as this will constitute an unauthorised absence. A Fixed Penalty Notice will then be issued in accordance with section 444 of the Education Act 1996.

The law stipulates that the current penalties payable by parents are £60 when the penalty is paid within 21 days and £120 when the penalty is paid within 28 days. This penalty is per parent/carers per child.

If the fixed penalty is not paid this could lead to parents/carers being prosecuted in the Magistrates' Court.

If you feel the decision has not taken into account any relevant exceptional circumstances, then you will need to contact the school immediately for further discussion.

The school opening and closing times:

School Gates and Classroom Doors Open at 8:40am



Doors close at 9:00am and Registration for **KS1** (Rec, Year 1 & Year 2)

Doors close at 8:50am and Registration for **KS2** (Year 3, Year 4, Year 5 & Year 6)

Please ensure that your child arrives on time to prevent a late mark and also to minimise disruption to lessons.

**(Any late arrivals are monitored and are reported to our Education Welfare Officer).**



# SCHOOL UNIFORM REMINDER

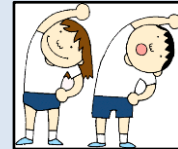
## School Uniforms

### Our School Uniform:

- Grey pinafore, skirt or trousers for girls.
- Grey trousers for boys
- Yellow polo shirt or shirt/blouse (available with school logo)
- Royal blue sweatshirt or cardigan (available with school logo)
- Grey or white socks or tights
- Blue & white checked dress (summer term only) for girls
- Black shoes in an appropriate style.

### PE:

- Black/Blue shorts
- Plain White t-shirt
- Training shoes (outdoor), plimsoles (indoor)



*Please ensure all items are clearly labelled with your child's name.*

Trainers, multi-coloured socks, and jogging bottoms are NOT part of the school uniform at Wharton Church of England Primary School, Winsford. If you are experiencing financial difficulties in providing the appropriate school uniform for your child then please don't hesitate to contact Mrs Maloney (Family Co-ordinator) or Mrs Connor who are happy to talk to you about this.



Just to remind all parents/carers to please ensure that all uniform, water bottles, book bags, coats and PE kits are **labelled** with your child's name so that should they get misplaced they can be returned.

If any personal details regarding you or your child/ren change, please can you remember to inform the school office as soon as possible. It is important that any changes that occur are documented in the event of an emergency where we will need to contact you.

## Parent Representative on the Governing Body

Are you interested in being a member of the Governing Body as a Parent Representative? The paperwork for nominations will be sent home with your child in the next couple of weeks. If you would like further information please contact Mrs Ashford.

PERSONAL DETAILS

NOMINATIONS  
ARE OPEN



## SCHOOLS ONLINE PAYMENT SYSTEM

Did you know that we have a Confidential Online Payment Access System? This system allows you to make payments to our school for school dinners and also some school trips using the Internet. On your request a registration letter will be handed to you which gives full instructions on how to create an account to use for online payments. You can use this same account for any children you may have at this school, and for children at other schools where the same online payment system is used. Simply create the online account by following steps outlined in your registration letter. The school will provide a separate Online Link Code for each child. The minimum amount you can top up your child's dinner money account is **£11.25**. This will show as a credit on your child's account and they can then use these funds to cover 5 school dinners whenever you choose i.e. they can have lunch every Friday for the next 5 weeks or they can have lunch every day that week. If you need help or a Registration Letter regarding the use of the Internet Payments system please contact the school office.

### IS YOUR CHILD YOU ENTITLED TO FREE SCHOOL MEALS?

All children in Reception, Year 1 and Year 2 are eligible for **Universal Free School Meals**. In addition, some children in classes Reception to Year 6 may be eligible to receive **Pupil Premium Free School Meals** and this can continue throughout your child's schooling. You however have to apply for this by completing a registration form. If you think you fall in to the criteria listed opposite then the school receives extra funding which will be spent on resources such as one to one tutoring, music lesson, and extra-curricular clubs. This funding is based on children registered for a **Pupil Premium Free School Meals**, further reinforcing the importance of making sure all those who qualify are actually registered. Please consider this if your child is in Reception, Year 1 or Year 2; if you are eligible for **Pupil Premium** you do need to register, **Universal Free School Meals** are not the same.

Your child may be entitled to receive **Pupil Premium Free School Meals** if you are entitled to receive one of the following:

- 1) Income Support
- 2) Income-based Jobseeker's Allowance
- 3) Income-related Employment & Support Allowance
- 4) Support under Part VI of the immigration and Asylum Act 1999
- 5) The Guarantee element of State Pension Credit
- 6) Child Tax Credit, provided you are entitled to Working Tax Credit and have an annual income that does not exceed £16,190
- 7) Universal Credit

**For a form or further information please contact:  
FREE SCHOOL MEALS Tel: 0300 123 7039**



Water bottles are available from the school office, cost 90p. New lids 20p.

### SCHOOL DINNERS

Just to remind you that school dinners are **£2:25** (£11:25 for the week) payable each Monday. Please put all monies in a sealed envelope marked clearly with your child's name, class and amount to be paid. Remember you can also pay on-line, contact the office for further details.

